

4109 SHADOW POINTE Lane Indianapolis

Perfect Indianapolis Home

PROPERTY DETAILS



Listing Price: **\$125,000**

Listing Address: 4109 SHADOW

POINTE Lane

Indianapolis IN 46254

Bedrooms: 3

Full Baths: 2

Partial Baths: 0

SQ FT: 1730

Lot Size: 74x197

Style: Traditional

Garage: 2 Car

Heat Source: Electric

Schools: Pike Township

QR Code:

On a SmartPhone?
Scan the QR code
to see this listing



PROPERTY DESCRIPTION

Charm and style are personified in this wonderful home. Fabulous upgrades and paint adorn this perfectly maintained three bedroom two and a half bathroom home on a quiet cul-de-sac in a very desirable neighborhood. If the indoor living space is not enough, the home boasts a fantastic deck and huge private back yard. Great location and close to down town this home truly is a must see!

CONTACT INFORMATION



O'Neil & Company
Encore Sotheby's International Realty
oneilrealtors.com

9510 N Meridian St STE 200

Indianapolis IN 46260

317.848.0008

317.660.4574

ryan.oneil@sothebysrealty.com



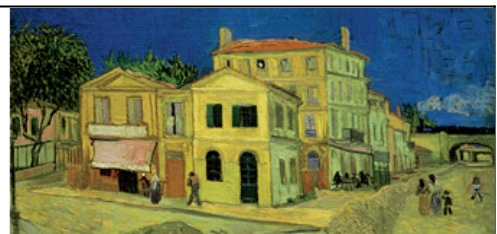
Real Estate Specialists

Jay & Ryan O'Neil

Carmel, Fishers, Indianapolis, Westfield & Zionsville

Encore

Sotheby's
INTERNATIONAL REALTY



Equal Housing Opportunity

Property information deemed reliable but not guaranteed and should be verified.

Copyright © 2003-2012 Real Pro Systems LLC. All rights reserved.