

2360 Glebe St Carmel

A GEM IN THE VILLAGE OF WEST CLAY!

PROPERTY DETAILS



Listing Price: **\$425,000**

Listing Address: 2360 Glebe St

Carmel IN 46032

Bedrooms: 3

Full Baths: 4

Partial Baths: 0

SQ FT: 3499

Style: TradAmer

Garage: 2 Car

Heat Source: Gas

Schools: Carmel

QR Code:

On a SmartPhone?
Scan the QR code
to see this listing



PROPERTY DESCRIPTION

[Additional Photos](#)

Absolutely perfect Village of WestClay home. The residence on Glebe reflects the essence of Village living framed by the perfect blend of modernism and traditionalism. The home boasts: hardwood floors, chef's kitchen, subway tile backsplash, undercabinet transom windows, stamped concrete basement walls, a spacious backyard and the list goes on. No detail was overlooked when styling this home, if you see one home in the Village of WestClay, this should be it.

CONTACT INFORMATION



O'Neil & Company
Encore Sotheby's International Realty
oneilrealtors.com

9510 N Meridian St STE 200

Indianapolis IN 46260

317.848.0008

317.660.4574

ryan.oneil@sothebysrealty.com



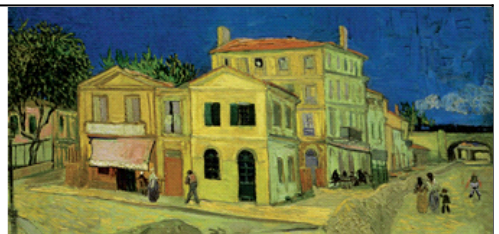
Real Estate Specialists

Jay & Ryan O'Neil

Carmel, Fishers, Indianapolis, Westfield & Zionsville

Encore

Sotheby's
INTERNATIONAL REALTY



Equal Housing Opportunity

Property information deemed reliable but not guaranteed and should be verified.

Copyright © 2003-2012 Real Pro Systems LLC. All rights reserved.