

# 1020 Lichfield Ln Westfield

## PROPERTY DETAILS



**Listing Price:** **\$165,000**

**Listing Address:** 1020 Lichfield Ln

Westfield IN 46074

**Bedrooms:** 4

**Full Baths:** 2

**Partial Baths:** 0

**SQ FT:** 2030

**Style:** TradAmer

**Garage:** 2 Car

**Heat Source:** Electric

**Schools:** Westfield

**QR Code:**

On a SmartPhone?  
Scan the QR code  
to see this listing



## PROPERTY DESCRIPTION

Your search is over! The home at 1020 Lichfield Lane shows like a model, tastefully designed with timeless style you will not be disappointed by any aspect of the home. Open floor plan, second story loft and bonus room, chef's kitchen, fenced yard are but a few of the details that make this home stand out. Come see what makes this home so special! The fourth bedroom could easily serve as a den/office or dining room depending on your needs.

## CONTACT INFORMATION



**O'Neil & Company**  
**Encore Sotheby's International Realty**  
**oneilrealtors.com**

9510 N Meridian St STE 200

Indianapolis IN 46260

317.848.0008

317.660.4574

ryan.oneil@sothebysrealty.com



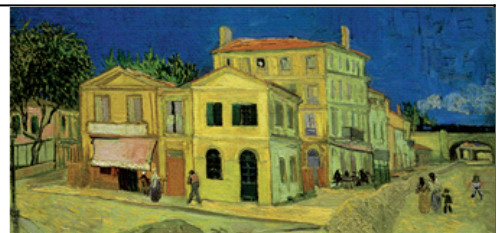
**Real Estate Specialists**

**Jay & Ryan O'Neil**

*Carmel, Fishers, Indianapolis, Westfield & Zionsville*

**Encore**

**Sotheby's**  
INTERNATIONAL REALTY



**Equal Housing Opportunity**

Property information deemed reliable but not guaranteed and should be verified.

Copyright © 2003-2012 Real Pro Systems LLC. All rights reserved.